

Creating Voice Analysis Programs



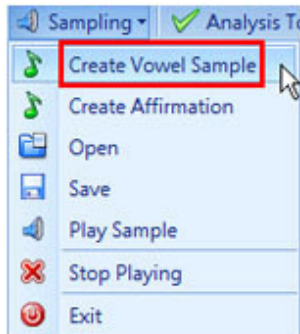
Check Privilege Level to run as an administrator

Double click on *Quantum Sound Therapy Logo to start program

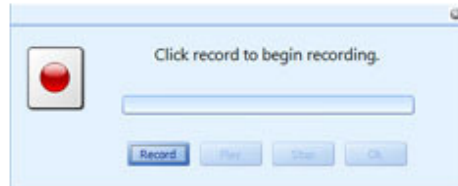
Tips for Creating Perfect Vowel Samples

Bay Bee Bye Bo Boo Hay Hee Hi Ho Hoo

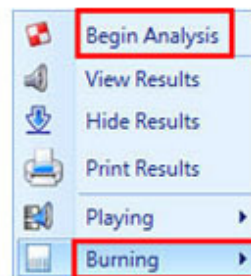
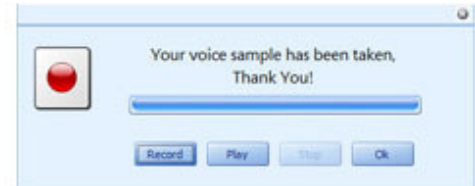
Use normal speaking voice. Do not take a deep breath. Begin repeating the Vowel sounds, click **record** while repeating the vowels. Do not be concerned where your sample starts and ends. Our software captures everything



Step 1 - Select
*Create Vowel Sample to
record your Voice Sample



After capturing voice sample
select *Begin Analysis
then select *Burning
then select *Save as mp3



Step 2 - Select
*Begin Analysis
then *Burning

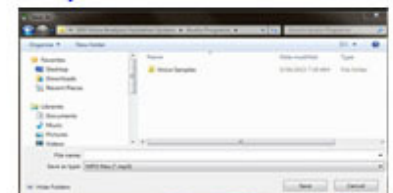


Step 3 - Select *Save as MP3

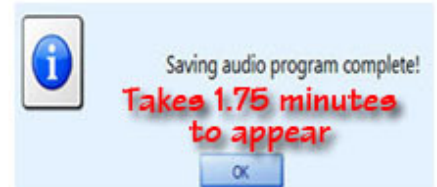


Make sure the memory
stick is plugged into your
computer with IQube microSD
audio program chip installed

The instructions below will walk you through the
process of adding your personal tones to the
default IQube program. We recommend replacing
your personal analysis program once a week.



When this screen appears drill
down to microSD Removable Disk



1. Turn off Sansa Player (on top) remove the default microSD audio program chip
2. Replace Memory Stick microSD chip with the Sansa IQube microSD audio program Chip



microSD IQube program Chip

3. Install new IQube Program Chip back into the Sansa player
4. Turn on Sansa Player (on top) Wait while the Player updates
5. Select *music, then *all songs, then *play

Your personal voice analysis program will be found at the
end of the default programs. You can use the controls to
select and play your personal program at anytime. We
highly recommend playing them at least twice a day.